



# Air-Powered Gearmotors

1AM and 1UP Series, 15:1 reduction, 10 - 95 lbs. in. (1 - 11 Nm) torque at 40 rpm (minimum speed reduction)



## MODEL

### 1AM-NRV-56-GR11

(4 Vanes, Reversible)

### 1AM-NRV-60-GR11

(8 Vanes, Reversible)

Net wt 5 lbs. (2,3 kg)

## FEATURES

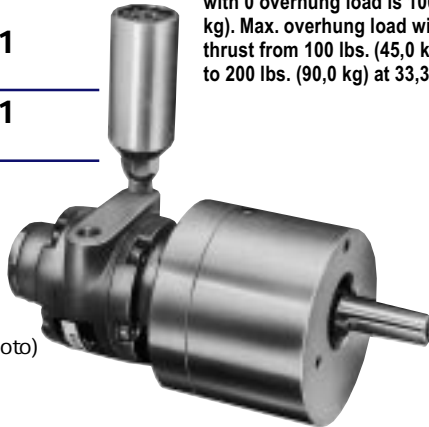
- 15:1 gear reducer
- Face mounting
- Horizontal or shaft down operation
- Muffler AF 350 (shown in photo)

## RECOMMENDED

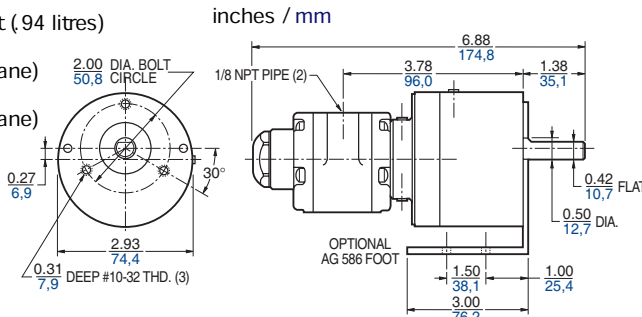
- Filter AH100F
- Regulator AH101R
- Gauge AA 807
- Lubricator AH102L
- Oil AD 220 - 1 quart (.94 litres)
- Repair kit K 278 (Air motor only, 8 Vane)
- Repair kit K 201 (Air motor only, 4 Vane)

## OPTIONAL

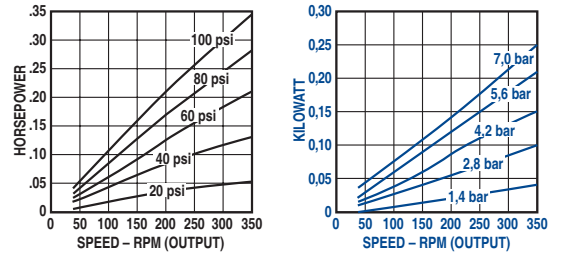
- Muffler AL 444 (for additional noise reduction) see pages 6, 8



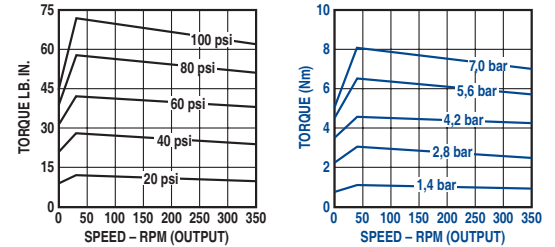
Max. allowable end thrust with 0 overhung load is 100 lbs. (45,0 kg). Max. overhung load with 0 end thrust from 100 lbs. (45,0 kg) at 333 rpm to 200 lbs. (90,0 kg) at 33,3 rpm.



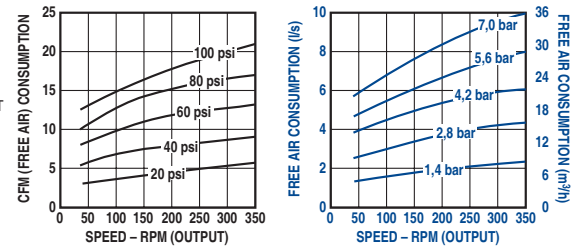
## Output Power vs. Speed



## Torque vs. Speed



## Air Consumption vs. Speed



## MODEL

### 1UP-NRV-4-GR11

(4 Vanes, Reversible)

### 1UP-NRV-11-GR11

(8 Vanes, Reversible)

Net wt 5 lbs. (2,3 kg)

## FEATURES

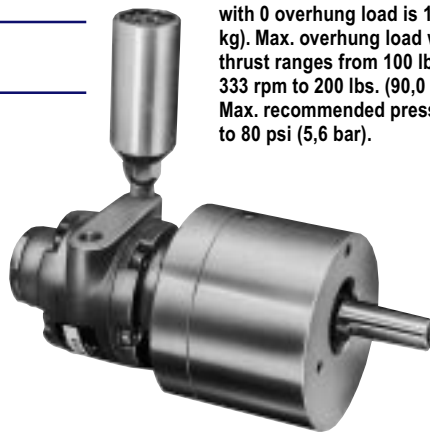
- 15:1 gear reducer
- Face mounting
- Horizontal or shaft down operation
- Muffler AF 350 (shown in photo)

## RECOMMENDED

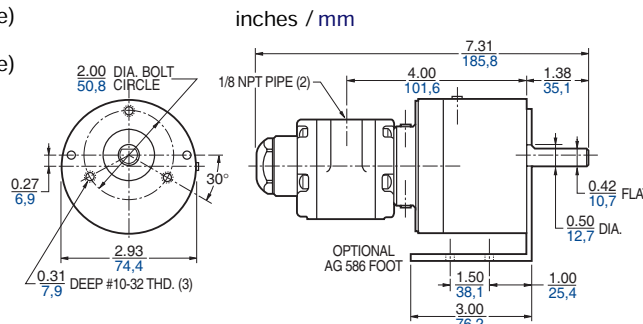
- Filter AH100F
- Regulator AH101R
- Gauge AA 807
- Lubricator AH102L
- Oil AD 220 - 1 quart (.94 litres)
- Repair kit K 298 (Air motor only, 8 Vane)
- Repair kit K 286 (Air motor only, 4 Vane)

## OPTIONAL

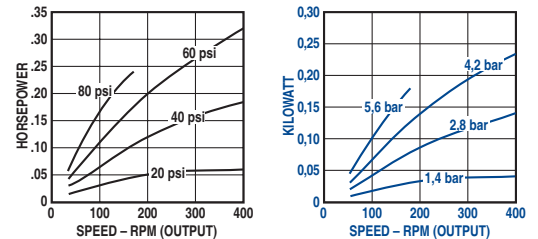
- Muffler AL 444 (for additional noise reduction) see pages 6, 8



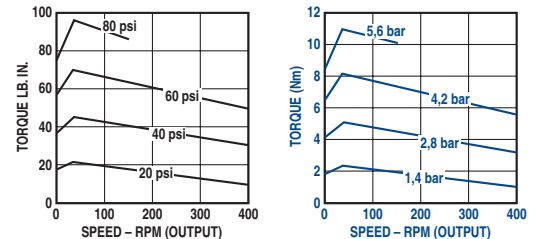
Max. allowable end thrust with 0 overhung load is 100 lbs. (45,0 kg). Max. overhung load with 0 end thrust ranges from 100 lbs. (45,0 kg) at 333 rpm to 200 lbs. (90,0 kg) at 33,3 rpm. Max. recommended pressures to 80 psi (5,6 bar).



## Output Power vs. Speed



## Torque vs. Speed



## Air Consumption vs. Speed

