

BALDOR® • RELIANCE

Product Information Packet

VL3501

.33HP, 1725RPM, 1PH, 60HZ, 56C, 3414L, TEFC, F1

Part Detail							
Revision:	V	Status:	PRD/A	Change #:		Proprietary:	No
Type:	AC	Prod. Type:	3414L	Elec. Spec:	34WG5507	CD Diagram:	
Enclosure:	TEFC	Mfg Plant:		Mech. Spec:	34C063	Layout:	
Frame:	56C	Mounting:	F1	Poles:	04	Created Date:	
Base:	N	Rotation:	R	Insulation:	B	Eff. Date:	02-26-2010
Leads:	6#18	Literature:		Elec. Diagram:		Replaced By:	

Nameplate NP1256L

CAT.NO.	VL3501						
SPEC.	34C63-5507						
HP	.33						
VOLTS	115/230						
AMP	6/3						
RPM	1725						
FRAME	56C	HZ	60	PH	1		
SER.F.	1.35	CODE	L	DES	N	CLASS	B
NEMA-NOM-EFF	60	PF	60				
RATING	40C AMB-CONT						
CC		USABLE AT 208V	3.6				
DE	6203	ODE	6203				
ENCL	TEFC	SN					
	SFA 6.8/3.4						

Parts List		
Part Number	Description	Quantity
SA005683	SA 34C63-5507	1.000 EA
RA002429	RA 34C63-5507	1.000 EA
EC1189A02SP	61B2D120189NNBA ELEC CAP, 189-227MFD, 12	1.000 EA
NS2512A01	INSULATOR, CONDUIT BOX X	1.000 EA
34CB3002A	CB CAST W/.88 DIA HOLE	1.000 EA
34GS1029A01	GASKET, CONDUIT BOX	1.000 EA
51XB1016A07	10-16 X 7/16 HXWSSLD SERTYB	2.000 EA
11XW1032G06	10-32 X .38, TAPTITE II, HEX WSHR SLTD U	1.000 EA
34EP3102A01SP	FR ENDPLATE, MACH	1.000 EA
51XW0832A07	8-32 X .44, TAPTITE II, HEX WSHR SLTD SE	2.000 EA
NS2500A01	INSULATOR, AUTO THER PROT	1.000 EA
34CB4800SP	CAPACITOR COVER, STAMPED	1.000 EA
34GS3000SP	GASKET, CAPACITOR BOX	1.000 EA
51XB1016A05	10-16X5/16HX WA SL SR TYB (F/S)	2.000 EA
HW5100A03SP	WAVY WASHER (W1543-017)	1.000 EA
51XN1032A20	10-32 X 1 1/4 HX WS SL SR	2.000 EA
34FN3002A01SP	EXTERNAL FAN, PLASTIC, .637/.639 HUB W/	1.000 EA
34FH4002A01SP	IEC FH NO GREASER	1.000 EA
51XW1032A06	10-32 X .38, TAPTITE II, HEX WSHR SLTD S	3.000 EA
34CB4517	CB LID 4 MTG HOLES .22 DIA STAMPED, FOR	1.000 EA
34GS1031A01	GASKET, FLAT CONDUIT BOX LID (LEXIDE)	1.000 EA
51XW0832A07	8-32 X .44, TAPTITE II, HEX WSHR SLTD SE	4.000 EA
HW2501D13SP	KEY, 3/16 SQ X 1.375	1.000 EA
HA7000A04	KEY RETAINER 0.625 DIA SHAFTS	1.000 EA

Parts List (continued)		
Part Number	Description	Quantity
34EP3300A24SP	PU ENDPLATE, MACH	1.000 EA
MG1000G27	PAINT- S9282E CHARCOAL GREY	0.014 GA
10XF0440S02	04-40 X 1/8 TYPE F HEX HD STAINLESS STIC	2.000 EA
SP5056A24	MODEL 34 TYPE L STATIONARY SWITCH WITH L	1.000 EA
HA3100A12	THRUBOLT 10-32 X 7.375	4.000 EA
LB1125C01	STD (STOCK) CARTON LABEL BALDOR WITH FLA	1.000 EA
LC0001A01	CONN LABEL / WARNING LABEL (LC0001 / LB1	1.000 EA
NP1256L	ALUM, UL CSA CC, W/O THERMAL, LASER	1.000 EA
34PA1002	PACKING GROUP, BALDOR	1.000 EA

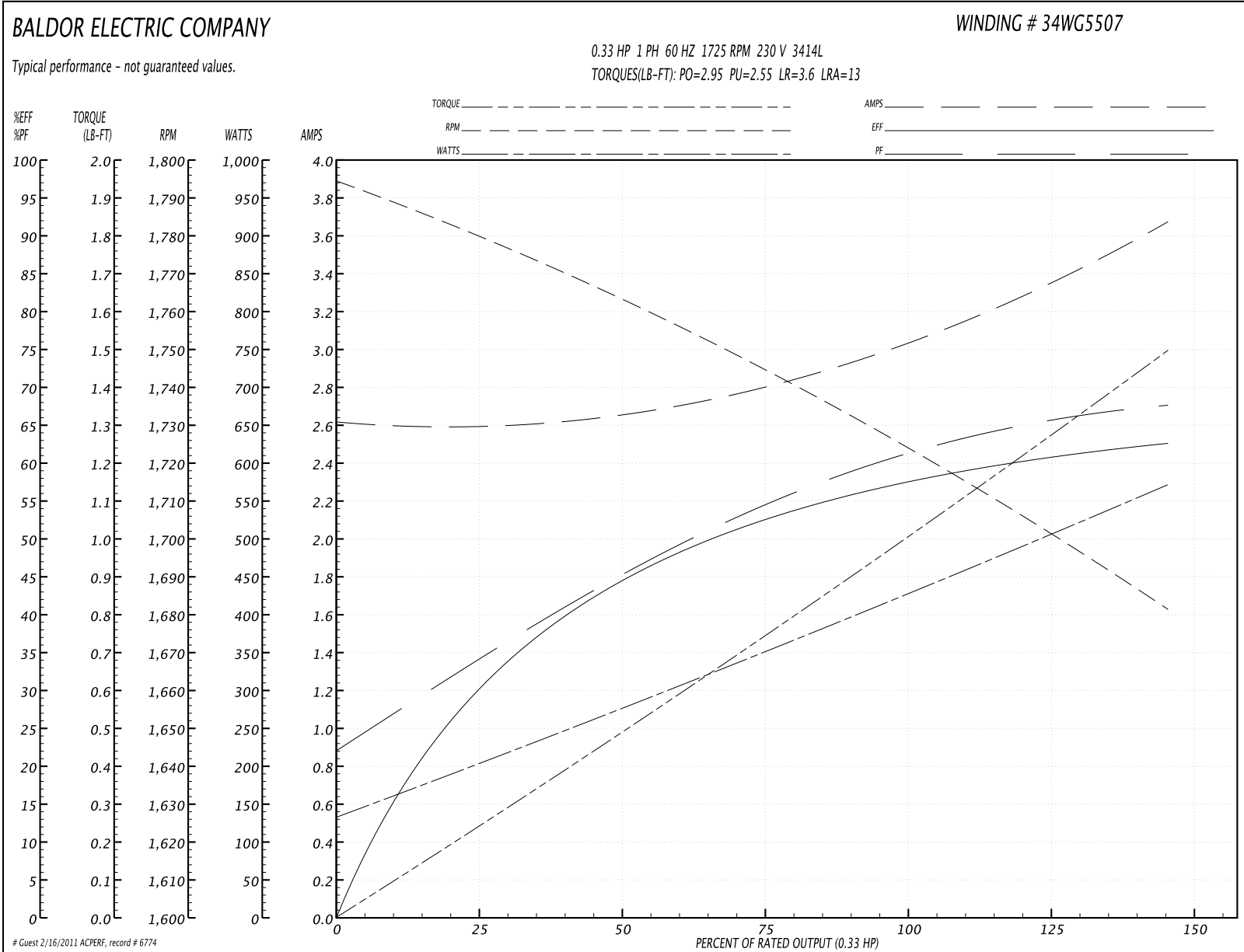
Performance Data at 230V, 60Hz, 0.33HP (Typical performance - Not guaranteed values)
General Characteristics

Full Load Torque:	1.0 LB-FT	Start Configuration:	DOL
No-Load Current:	2.6 Amps	Break-Down Torque:	2.95 LB-FT
Line-line Res. @ 25°C.:	6.32 Ohms A Ph / 4.93 Ohms B Ph	Pull-Up Torque:	2.55 LB-FT
Temp. Rise @ Rated Load:	59 C	Locked-Rotor Torque:	3.6 LB-FT
Temp. Rise @ S.F. Load:	73 C	Starting Current:	13.0 Amps

Load Characteristics

% of Rated Load	25	50	75	100	125	150	S.F.
Power Factor:	31.0	41.0	52.0	60.0	67.0	73.0	71.0
Efficiency:	33.0	41.0	52.0	60.0	61.5	61.5	61.5
Speed:	1780.0	1760.0	1745.0	1725.0	1705.0	1680.0	1690.0
Line Amperes:	2.6	2.7	2.8	3.0	3.3	3.7	3.4

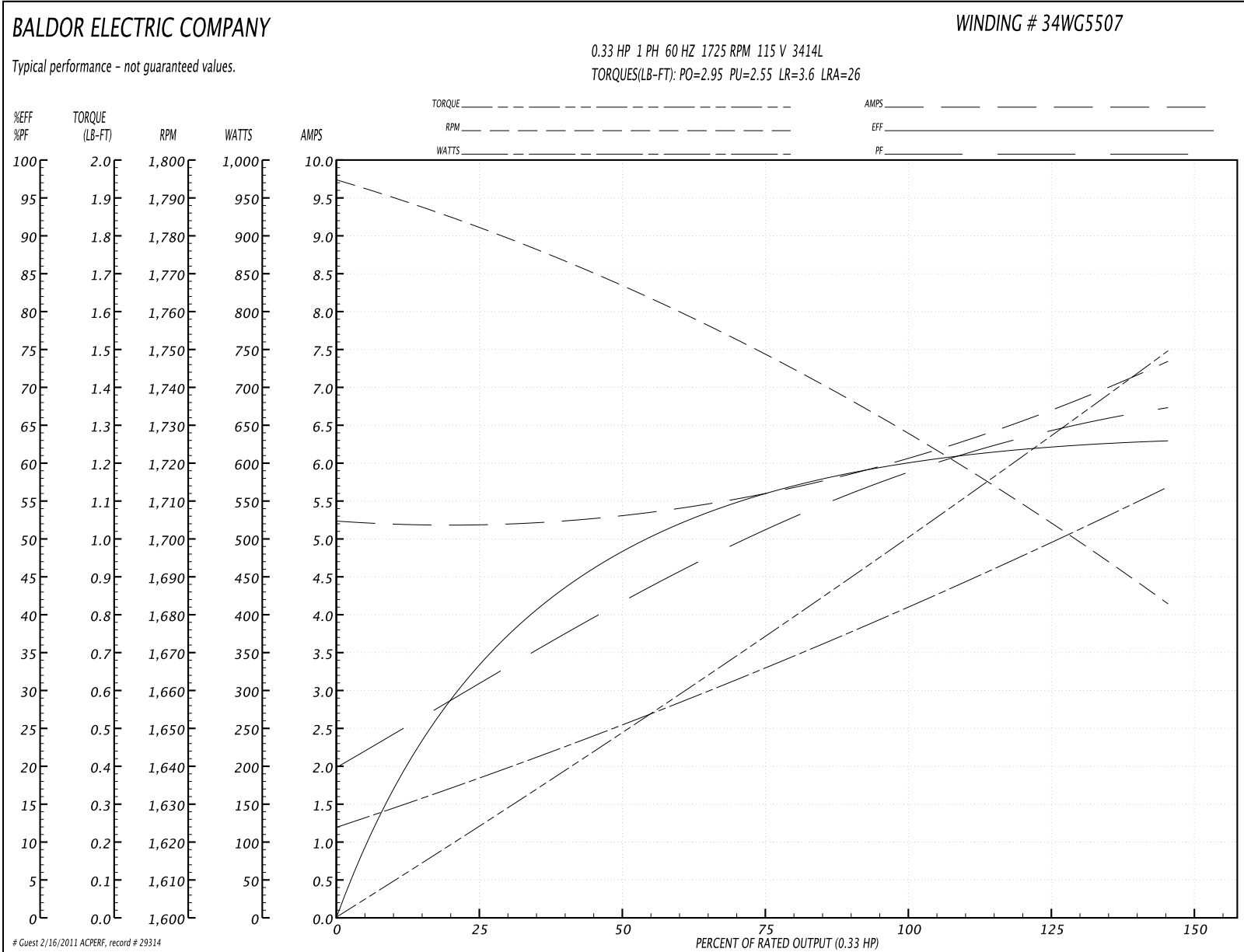
Performance Graph at 230V, 60Hz, 0.33HP Typical performance - Not guaranteed values

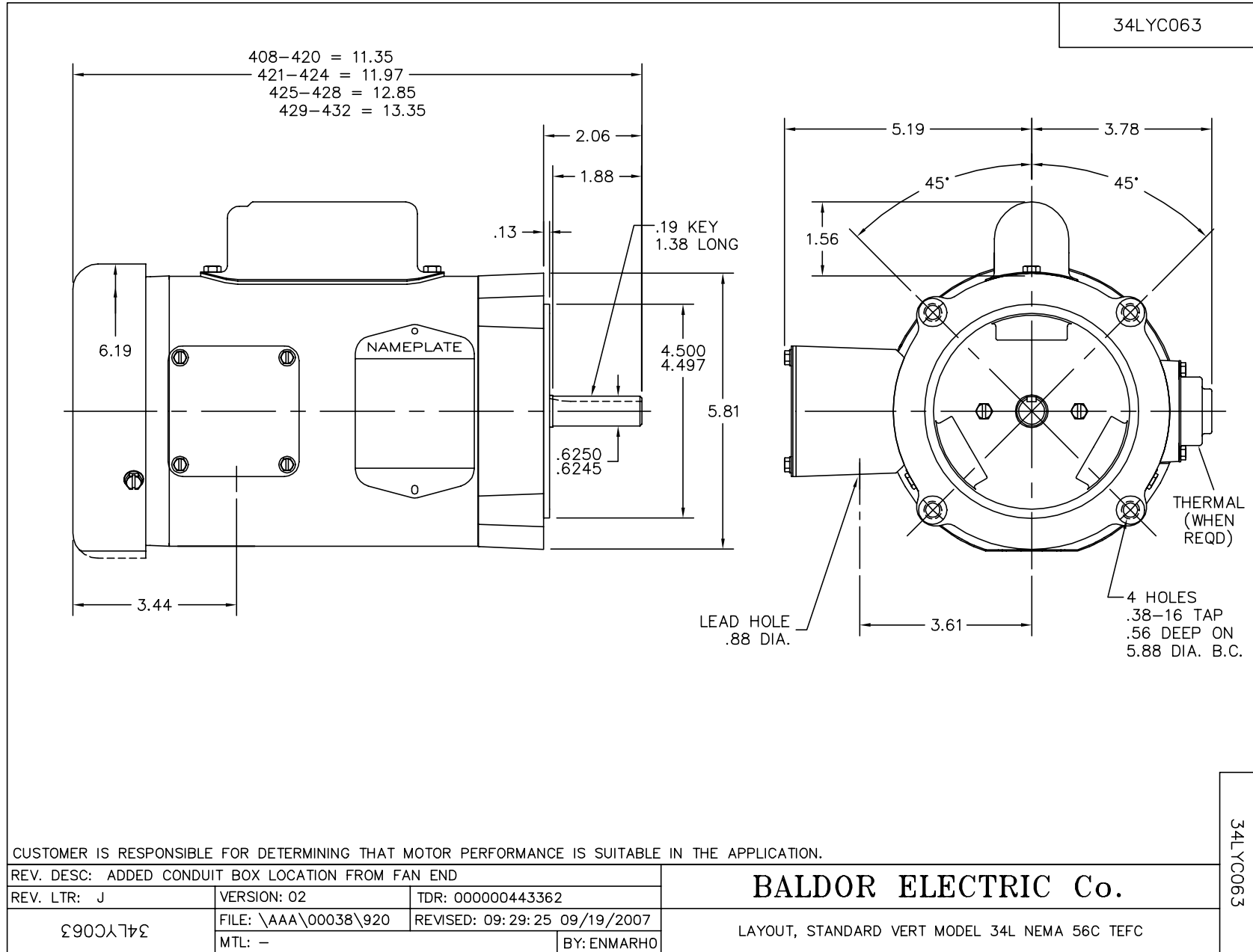


Performance Data at 115V, 60Hz, 0.33HP (Typical performance - Not guaranteed values)

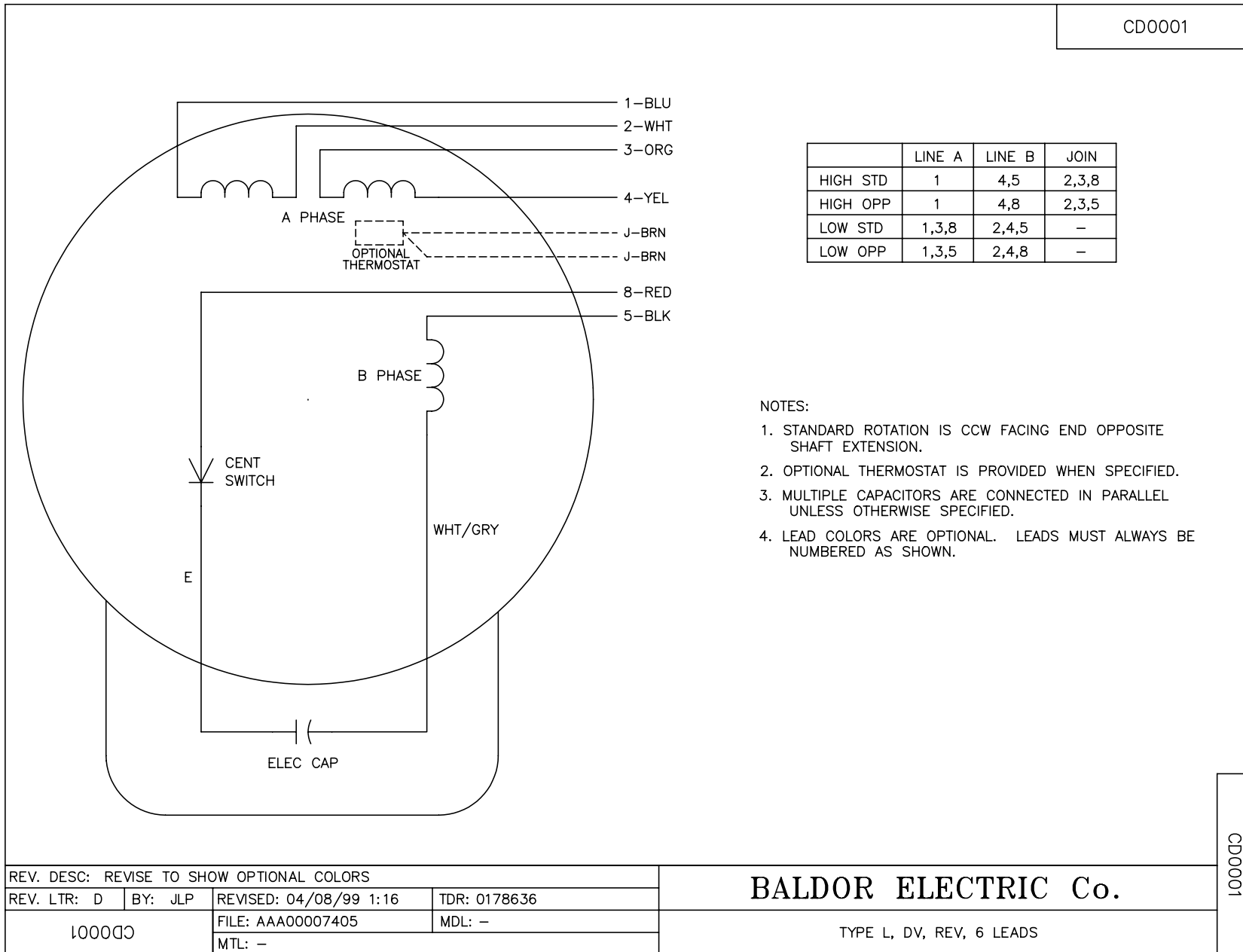
General Characteristics							
Full Load Torque:	1.0 LB-FT			Start Configuration:	DOL		
No-Load Current:	5.2 Amps			Break-Down Torque:	2.95 LB-FT		
Line-line Res. @ 25°C.:	1.5 Ohms A Ph / 4.81 Ohms B Ph			Pull-Up Torque:	2.55 LB-FT		
Temp. Rise @ Rated Load:	43 C			Locked-Rotor Torque:	3.6 LB-FT		
Temp. Rise @ S.F. Load:	52 C			Starting Current:	26.0 Amps		
Load Characteristics							
% of Rated Load	25	50	75	100	125	150	S.F.
Power Factor:	31.0	41.0	52.0	59.0	65.0	67.0	66.0
Efficiency:	34.0	49.0	56.0	59.9	62.0	63.0	62.4
Speed:	1783.0	1765.0	1745.0	1730.0	1710.0	1680.0	1698.0
Line Amperes:	5.2	5.4	5.6	6.0	6.6	7.4	6.92

Performance Graph at 115V, 60Hz, 0.33HP Typical performance - Not guaranteed values





CD0001



REV. DESC: REVISE TO SHOW OPTIONAL COLORS			
REV. LTR: D	BY: JLP	REVISED: 04/08/99 1:16	TDR: 0178636
100000		FILE: AAA00007405	MDL: -
		MTL: -	

BALDOR ELECTRIC Co.

TYPE L, DV, REV, 6 LEADS

CD0001