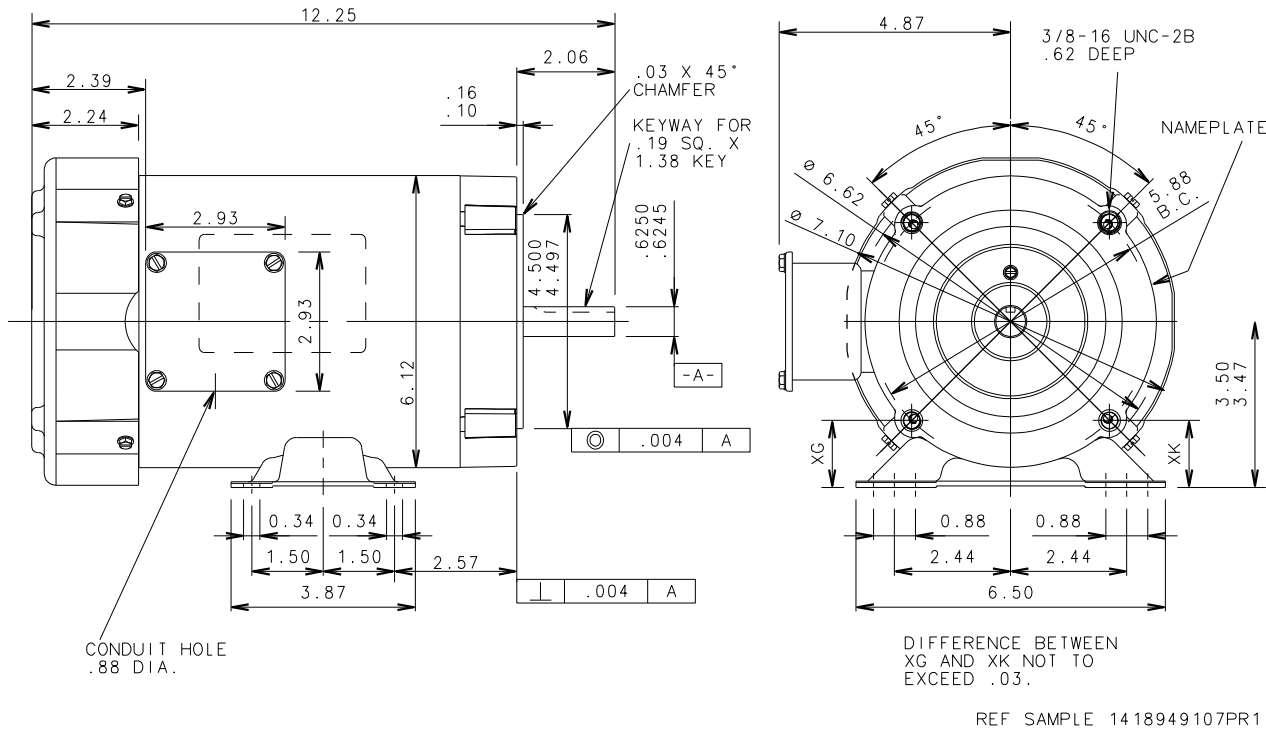


THE INFORMATION DISCLOSED HEREIN INCLUDES PROPRIETARY RIGHTS OF BLUFFTON MOTOR WORKS. NEITHER THIS DRAWING NOR THE INFORMATION DISCLOSED THEREIN SHALL BE REPRODUCED OR TRANSFERRED TO OTHER DOCUMENTS OR USED OR DISCLOSED TO OTHERS FOR MANUFACTURING PURPOSES OR FOR ANY OTHER PURPOSES, EXCEPT AS SPECIFICALLY AUTHORIZED IN WRITING BY BLUFFTON MOTOR WORKS.

1415007101

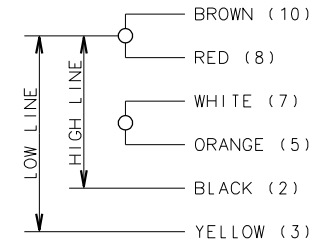
UNLESS OTHERWISE SPECIFIED DIMENSIONS WITHOUT TOLERANCES ARE REFERENCE ONLY

NOTES



LEADS
4" +2", -0" WITH .38" STRIPPING INTO CONDUIT BOX

EXTERNAL CONNECTIONS



TO REVERSE, INTERCHANGE WHITE (7) AND RED (8)

DIFFERENCE BETWEEN XG AND XK NOT TO EXCEED .03.
REF SAMPLE 1418949107PR1

MOTOR DATA

TYPE	SPLIT PHASE		ENCLOSURE	TEFC	VIEWING LEAD END	MOTOR ROTATION	REV
HP	1/2-1/4		BEARINGS	BALL	ASSEMBLY ROTATION	CW	
PH	1	HZ	60	PAINT	BLMW BLUE		
RPM	1725-1140	SF	1.0	MOUNTING POSITION	HORIZ/VERT DN		
VOLTS	115		END CAP	N/R			
F.L. AMPS	7.0-4.4		ENVIRONMENTAL CONDITION	DUSTY		WINDING AND TEST SPEC	338033
S.F. AMPS			SHAFT MATERIAL	COLD ROLLED STEEL			
FRAME	56				CUSTOMER PART NO.		
TIME RATE	CONT	MAX. AMB.	40°C		DRAWN	CLM 4-10-90	
KVA CODE	N	INS. CLASS	B		APPROVED	TPC	
					RELEASED	4-11-90	

PAR NO ECN NO	REV NO	CHANGE	FILM	DATE INIT
106951	6	CHG'D TO NEW PE END BELL AND NEW STYLE CANOPY		DGM 1-15-03

BLUFFTON MOTOR WORKS
Bluffton, Indiana 46714

MODEL NUMBER
1415007101

DIST: 3-21(2)-26-31-35